

UV COATERS

FT-UVC120

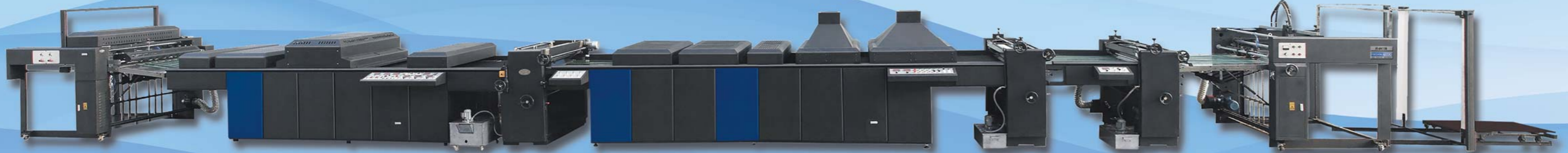
- Auto Feeder Paper
- Powder Remover
- Base Oil Coater
- IR Dryer
- UV Coater
- Levelling Light
- UV Dryer



FT-UVC120

Heavy duty machine for overall UV Coating on paper surface to increase brightness of printing job and enhance resistance of the surface against water, dampness, abrasion and corrosion.

Suitable for Packaging (Pharmaceutical, Food, etc...), Magazine Covers, Brochures, Posters, etc...



- **Auto Delivery**

Auto lifting UV Light Box prevents burning
Strong Air Blower helps reduce paper Curl



Specifications:

Max Paper Size (mm): 1200 x 1200/1200 x 1450/1200 x 1600

Min. Paper Size (mm): 350 x 400

Paper Thickness (gsm): 200-600

Speed (m/min): 25-75

UV Coating Thickness: 0.03 mm/2.5-3.6 gsm

Power Consumption: 74 kw

Weight: 8600 kg

Dimensions: 21700 x 2200 x 1480 mm

FT-UVC390/390A

For Short Runs and Digital Printing



Unique Graphics Pvt. Ltd.

Phone: 021-35122792-4

Email: contact@unigraph.com

Website: www.unigraph.com

UNIQUE GRAPHICS

FINISHING TOUCH

POST PRINTING EQUIPMENT

FT-1300/FT-1600



Paperboard UV Coating Machine

- Wide format and thick material coating in high speed.
- Touch screen control

Specifications:

Max Paper Size (mm): FT-1300/FT-1600

Paper Thickness (mm): 30

Speed (m/min): 20

UV Coater head (mm): 2050 x 925 x 1400

UV curing (mm): 2050 x 1575 x 1400

Power Consumption: 17 KW/19 KW

Weight: 1200 kgs

Dimensions (mm):

FT-UVC390/390A

FT-UVC390 and 390A are designed especially for digital printing, short-runs, PVC card, paper pre-printing coating, water-base and solvent inkjet printings etc.

The coating will make the printing brighter and durable, and can be water-proof, heat-proof and provides protection from sun.

- Easy Adjustment
- Convenient Operation
- Low Noise
- Small Footprint
- Modern Design
- Advanced Technology



Specifications:

Max. Paper Width: 410mm

Paper Thickness: 157-600 gsm (may vary according to paper quality)

Coating speed: 30m/min. (may vary according to paper size)

Power Supply: 220V 50Hz 5.5 KW

Total Weight: 255kgs

Dimension: 2280x785x1010mm